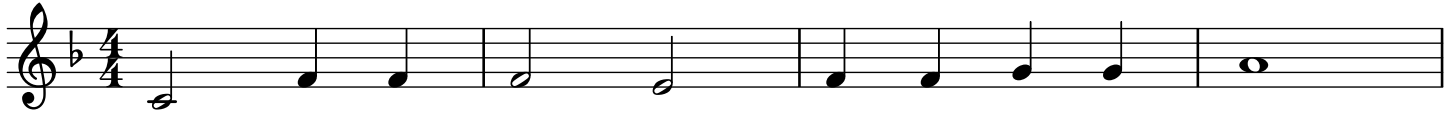
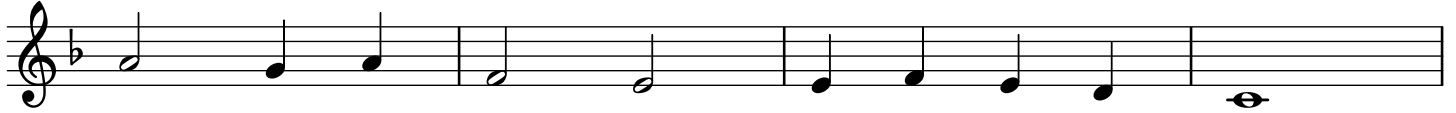


Draw Near and Take the Body of the Lord

Neale / ANIMA CHRISTI



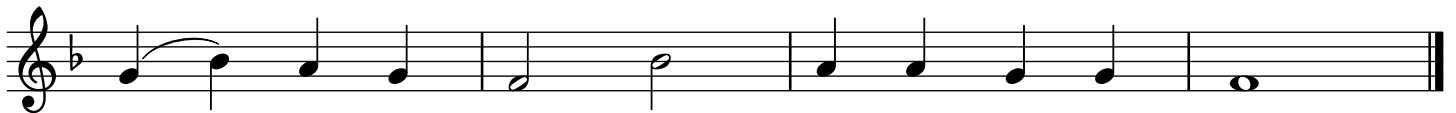
1. Draw near and take the bod - y of the Lord,
2. Our true Re - deem - er, Christ the on - ly Son,
3. The vic - tims of - fered by the law of old,
4. Let us ap - proach with lov - ing hearts sin - cere,
5. With bread of life he makes the hun - gry whole,



1. and drink his ho - ly blood for you out - poured;
2. by cross and blood a might - y vic - t'ry won,
3. as signs from God, e - ter - nal mys - t'ries told,
4. and take the pledge of our sal - va - tion here;
5. gives liv - ing wa - ters to each thirst - y soul.



1. saved by his bod - y and his pre - cious blood,
2. off - 'ring him - self for great - est and for least,
3. now Christ our light, the ran - som of our race,
4. Christ, who his faith - ful ser - vants rules and shields,
5. Christ Je - sus, first and last, is with us now,



1. our souls re - freshed, we of - fer thanks to God.
2. him - self the vic - tim and him - self the priest.
3. gives to his own this end - less source of grace.
4. to all be - liev - ers life e - ter - nal yields.
5. to him at end of time we all shall bow.

Inspiration: "Sancte venite, Corpus Christi sumite" from the "Antiphony of Bennchar", 7th cent.
Lyrics: 10.10.10.10; John M. Neale, 1818-1866, in his "Medieval Hymns and Sequences", 1851.
Music: ANIMA CHRISTI; William J. Maher, SJ, 1823-1877, in "Mission Hymns", 1864.